

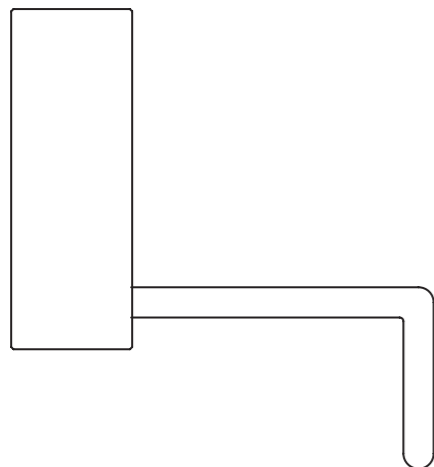


Dima per il montaggio. Mounting template.

→7 14 A

Modulo
porta bicchieri

Glass rack



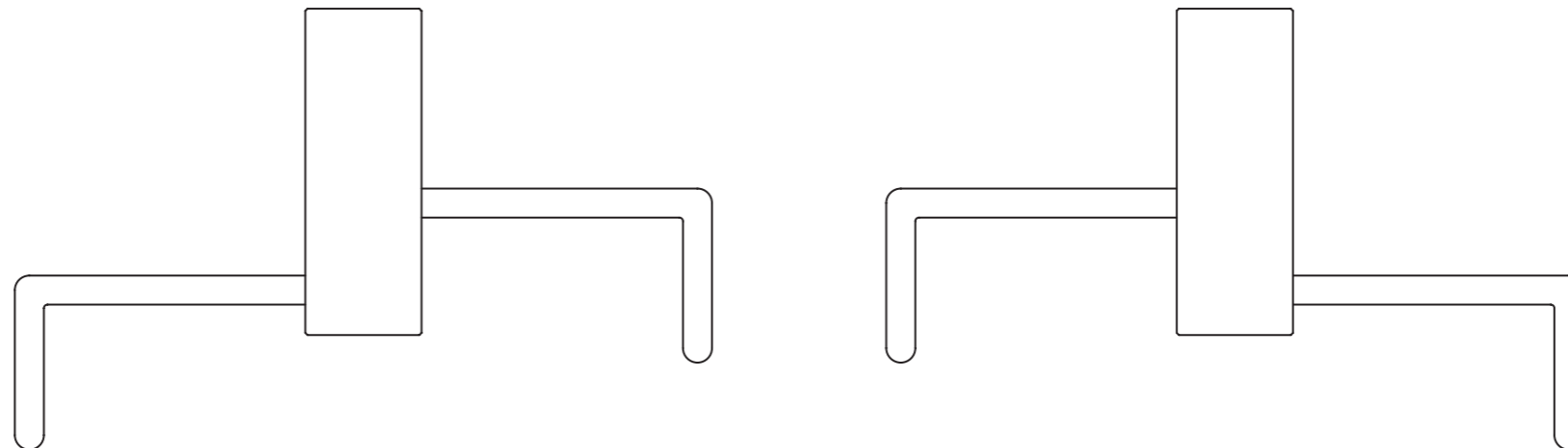
→7 14 B

Modulo estensione
porta bicchieri

(da abbinare al modulo 714A)

Extension for glass rack

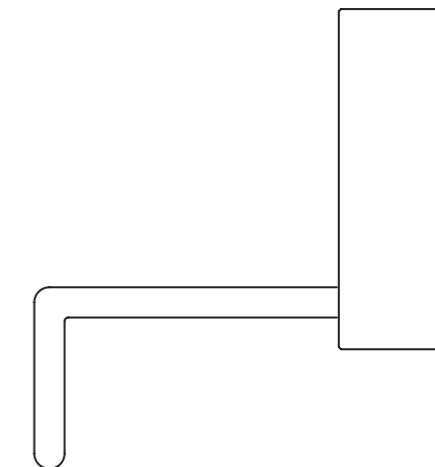
(to be combined with glass rack 714A)



→7 14 A

Modulo
porta bicchieri

Glass rack



Modulo estensione per porta bicchieri

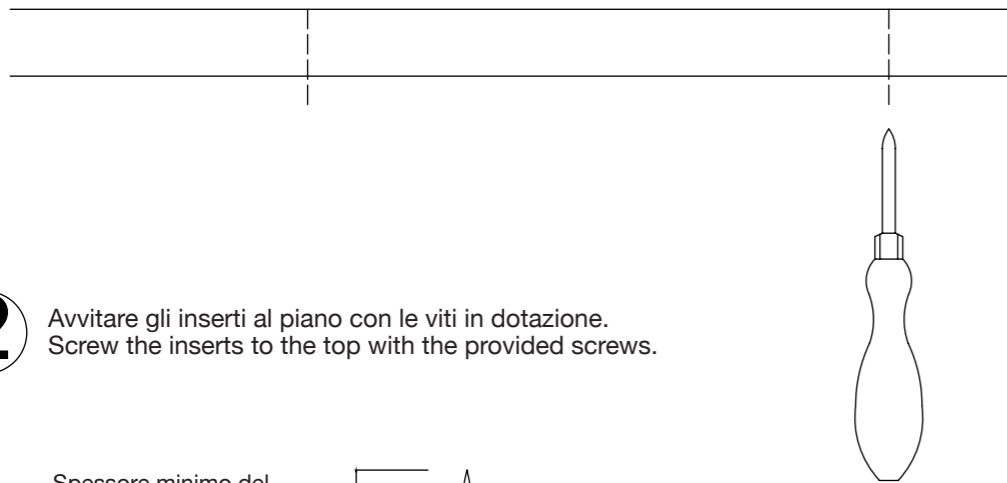
(da abbinare al modulo 714A)

Extension for glass rack

(to be combined with glass rack 714A)

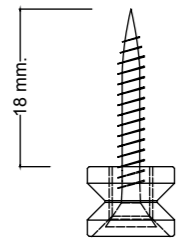
Istruzioni di Montaggio. Mounting instructions.

- 1** Segnare i centri sul piano con un punteruolo, aiutandosi con la dima.
Mark the centers on the top with an awl, by means of the template.

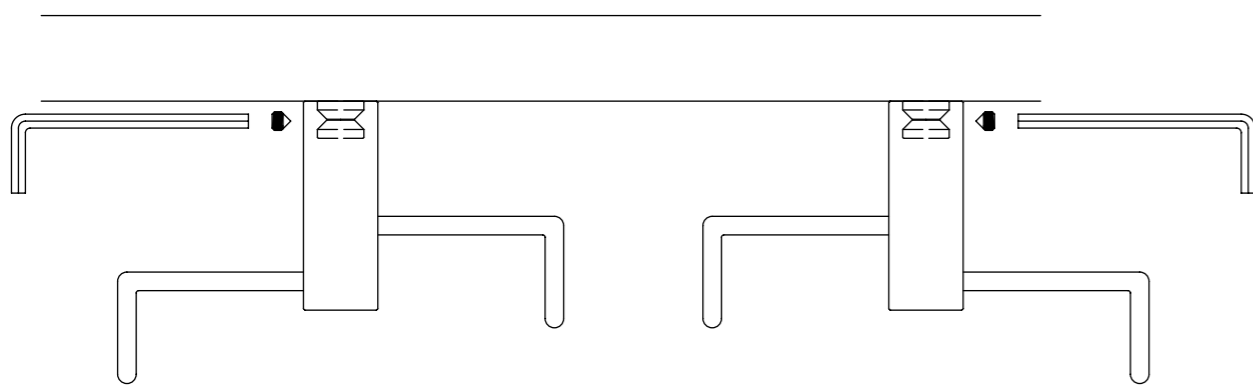


- 2** Avvitare gli inserti al piano con le viti in dotazione.
Screw the inserts to the top with the provided screws.

Spessore minimo del piano per l'utilizzo delle viti in dotazione.
Top minimum thickness if using the supplied screws.



- 3** Usare la chiave a brugola per fissare i supporti agli inserti.
Use the hexagonal screw to fix the supports to the inserts.



Tahuma s.r.l.
23815 Introbio (LC) Italy
P.za Cavour, 14
P.O.Box 55 / C.P.55
Tel. +39 0341 981535
Fax +39 0341 982707
www.tahuma.it
info@tahuma.it

tahuma
Alternative Interior Decoration

Contenuto della confezione Packaging contents

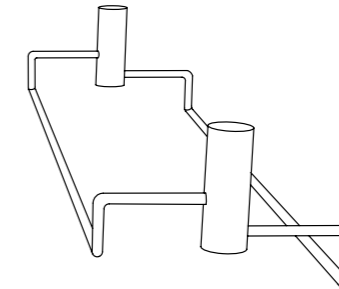
Pezzi / Pieces: 4



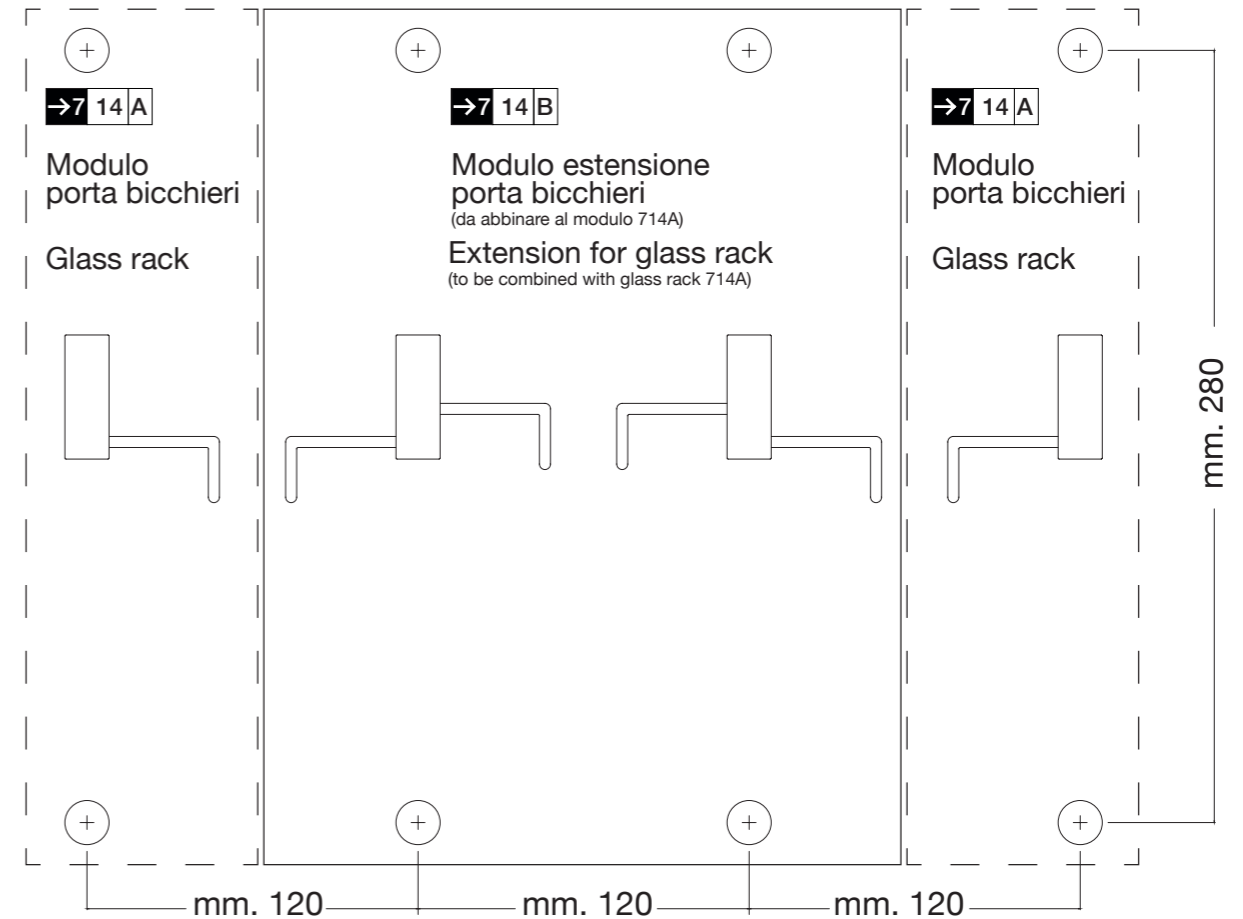
Pezzi / Pieces: 4



Pezzi / Pieces: 2



Pezzi / Pieces: 1



Sul retro dima da utilizzare per il montaggio.
Find the mounting template on the back.